

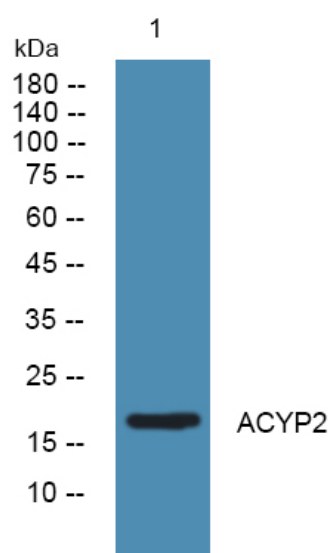


ACYP2 Polyclonal Antibody

Catalog No	YP-Ab-14642
Isotype	IgG
Reactivity	Human;Rat
Applications	WB;ELISA
Gene Name	ACYP2
Protein Name	Acylphosphatase-2
Immunogen	Synthesized peptide derived from ACYP2 . at AA range: 40-120
Specificity	ACYP2 Polyclonal Antibody detects endogenous levels of ACYP2 protein.
Formulation	Liquid in PBS containing 50% glycerol, 0.5% BSA and 0.02% sodium azide.
Source	Polyclonal, Rabbit,IgG
Purification	The antibody was affinity-purified from rabbit antiserum by affinity-chromatography using epitope-specific immunogen.
Dilution	Western Blot: 1/500 - 1/2000. ELISA: 1/10000. Not yet tested in other applications.
Concentration	1 mg/ml
Purity	≥90%
Storage Stability	-20°C/1 year
Synonyms	ACYP2; ACYP; Acylphosphatase-2; Acylphosphatase; muscle type isozyme; Acylphosphate phosphohydrolase 2
Observed Band	18kD
Cell Pathway	mitochondrion,
Tissue Specificity	Heart,Muscle,Ovary,
Function	catalytic activity:An acylphosphate + H(2)O = a carboxylate + phosphate.,function:Its physiological role is not yet clear.,similarity:Belongs to the acylphosphatase family.,similarity:Contains 1 acylphosphatase-like domain.,
Background	Acylphosphatase can hydrolyze the phosphoenzyme intermediate of different membrane pumps, particularly the Ca ²⁺ /Mg ²⁺ -ATPase from sarcoplasmic reticulum of skeletal muscle. Two isoenzymes have been isolated, called muscle acylphosphatase and erythrocyte acylphosphatase on the basis of their tissue localization. This gene encodes the muscle-type isoform (MT). An increase of the MT isoform is associated with muscle differentiation. Several transcript variants encoding different isoforms have been found for this gene. [provided by RefSeq, Feb 2016],
matters needing attention	Avoid repeated freezing and thawing!

**Usage suggestions**

This product can be used in immunological reaction related experiments. For more information, please consult technical personnel.

Products Images

Western blot analysis of lysates from Jarkat cells, primary antibody was diluted at 1:1000, 4° over night